

THIS INSTRUMENT PREPARED BY
DAVID P. LINDLEY

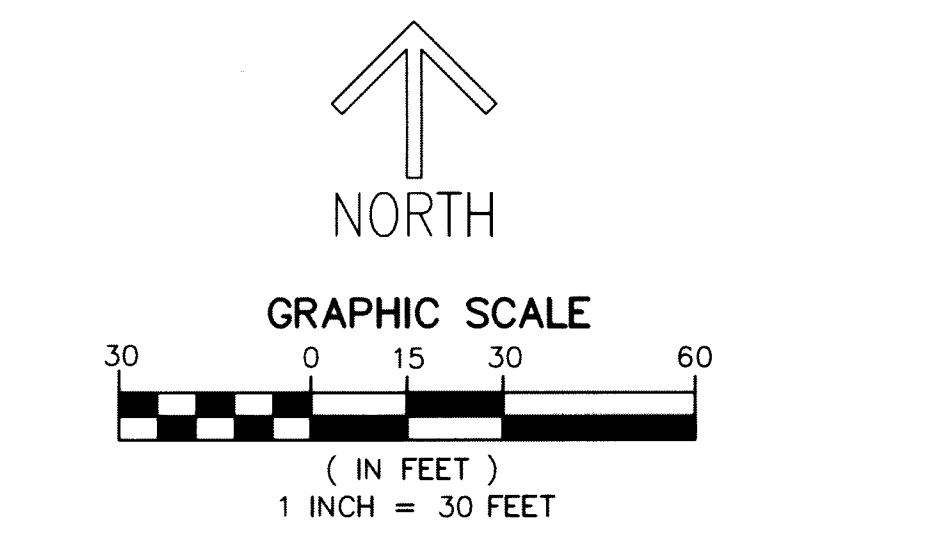
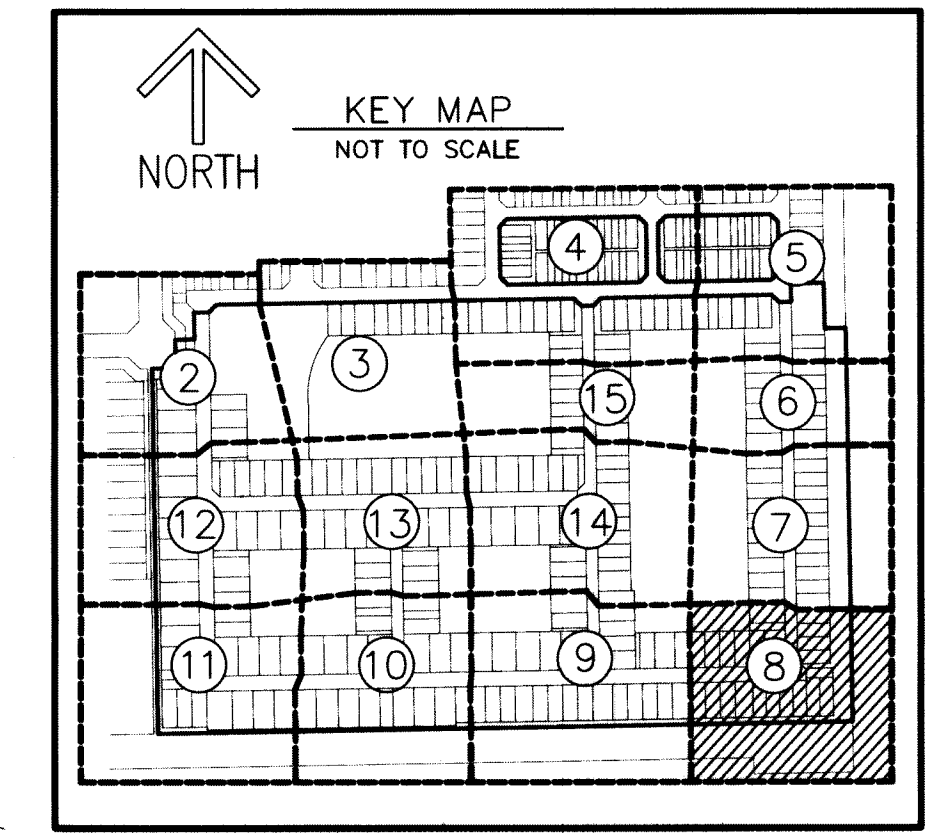
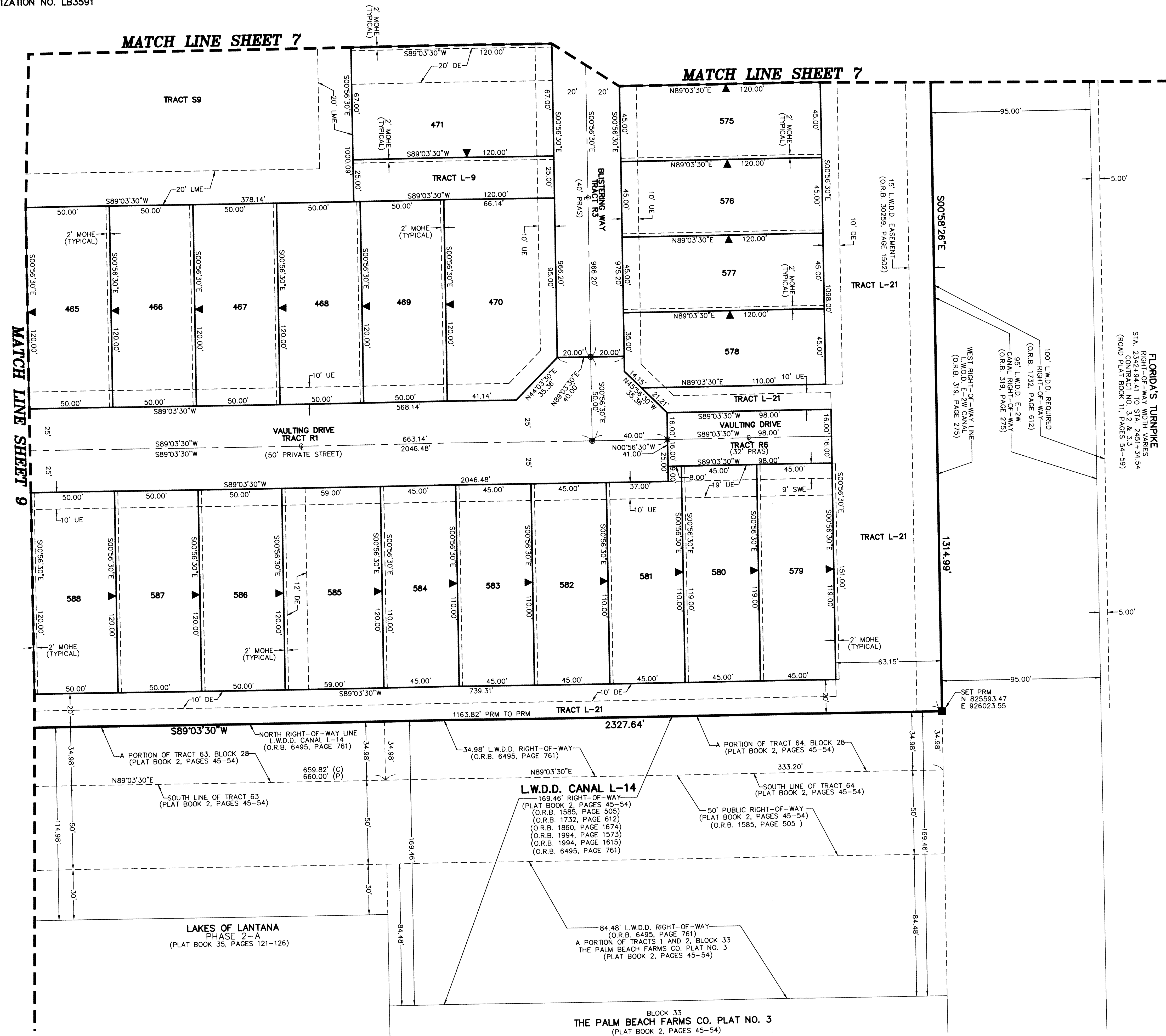
OF
CAULFIELD and WHEELER, INC.
SURVEYORS - ENGINEERS - PLANNERS
7900 GLADES ROAD, SUITE 100
BOCA RATON, FLORIDA 33434 - (561)392-1991
CERTIFICATE OF AUTHORIZATION NO. LB3591

FIELDS AT GULFSTREAM POLO PUD - PLAT THREE

A PLANNED UNIT DEVELOPMENT
BEING A REPLAT OF TRACTS F, G, H AND J, FIELDS AT GULFSTREAM POLO PUD - PLAT TWO, AS RECORDED IN PLAT BOOK 125, PAGES 130 THROUGH 137 AND A PORTION OF BLOCK 28, PALM BEACH FARMS CO. PLAT NO. 3, ACCORDING TO THE PLAT THEREOF, AS RECORDED IN PLAT BOOK 2, PAGE 45 THROUGH 54 ALL OF THE PUBLIC RECORDS OF PALM BEACH COUNTY, FLORIDA, LYING IN SECTIONS 29 AND 32, TOWNSHIP 44 SOUTH, RANGE 42 EAST, PALM BEACH COUNTY, FLORIDA

169

SHEET 8 OF 15



NOTES
COORDINATES, BEARINGS AND DISTANCES
COORDINATES SHOWN ARE GRID
DATUM = NAD 83 (90/98 ADJUSTMENT)
ZONE = FLORIDA EAST
LINEAR UNIT = US SURVEY FEET
COORDINATE SYSTEM 1983 STATE PLANE
TRANSVERSE MERCATOR PROJECTION
ALL DISTANCES ARE GROUND, UNLESS OTHERWISE NOTED
SCALE FACTOR = 1.0000236
GROUND DISTANCE X SCALE FACTOR = GRID DISTANCE
BEARINGS AS SHOWN HEREON ARE GRID DATUM,
NAD 83 (90/98 ADJUSTMENT), FLORIDA EAST ZONE.

LEGEND/ABBREVIATIONS

- C - CENTERLINE
- Δ - DELTA (CENTRAL ANGLE)
- (C) - CALCULATED
- CB - CHORD BEARING
- CD - CHORD DISTANCE
- DE - DRAINAGE EASEMENT
- E - EASTING (WHEN USED WITH COORDINATES)
- L - ARC LENGTH
- LAE - LIMITED ACCESS EASEMENT
- LB - LICENSED BUSINESS
- LMAE - LAKE MAINTENANCE ACCESS EASEMENT
- LME - LAKE MAINTENANCE EASEMENT
- LSE - LIFT STATION EASEMENT
- L.W.D.D. - LAKE WORTH DRAINAGE DISTRICT
- N - NORTHING (WHEN USED WITH COORDINATES)
- MOHE - MAINTENANCE AND OVERHANG EASEMENT
- O.R.B. - OFFICIAL RECORD BOOK
- PRAS - PRIVATE RESIDENTIAL ACCESS STREET
- PBCUE - PALM BEACH COUNTY UTILITY EASEMENT
- R - RADIUS
- UE - UTILITY EASEMENT
- SWE - SIDEWALK EASEMENT
- (P) - PALM BEACH FARMS CO. PLAT NO. 3 (PLAT BOOK 2, PAGES 45-54)
- (P1) - FIELDS AT GULFSTREAM POLO PUD - PLAT ONE (PLAT BOOK 123, PAGES 80-95)
- (P2) - FIELDS AT GULFSTREAM POLO PUD - PLAT TWO (PLAT BOOK 125, PAGES 130-137)
- ▶ - INDICATES "ZERO" SIDE OF LOT LINE
- PRM - DENOTES PERMANENT REFERENCE MONUMENT 4" x 4" x 24" CONCRETE MONUMENT WITH ALUMINUM DISK STAMPED "C&W PRM LB3591"
- PCP - DENOTES PERMANENT CONTROL POINT NAIL AND METAL DISK STAMPED "PCP LB3591"

BLOCK 33
THE PALM BEACH FARMS CO. PLAT NO. 3
(PLAT BOOK 2, PAGES 45-54)